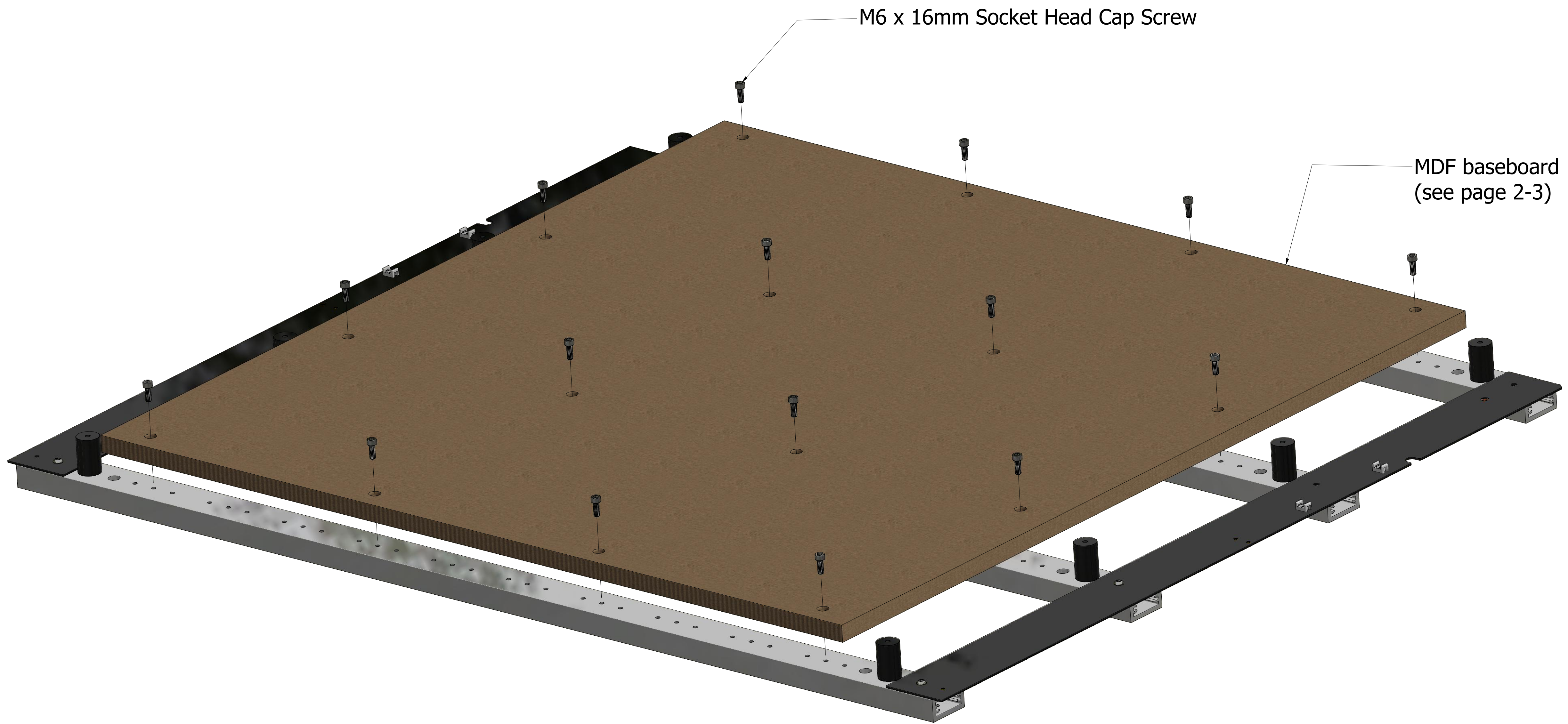



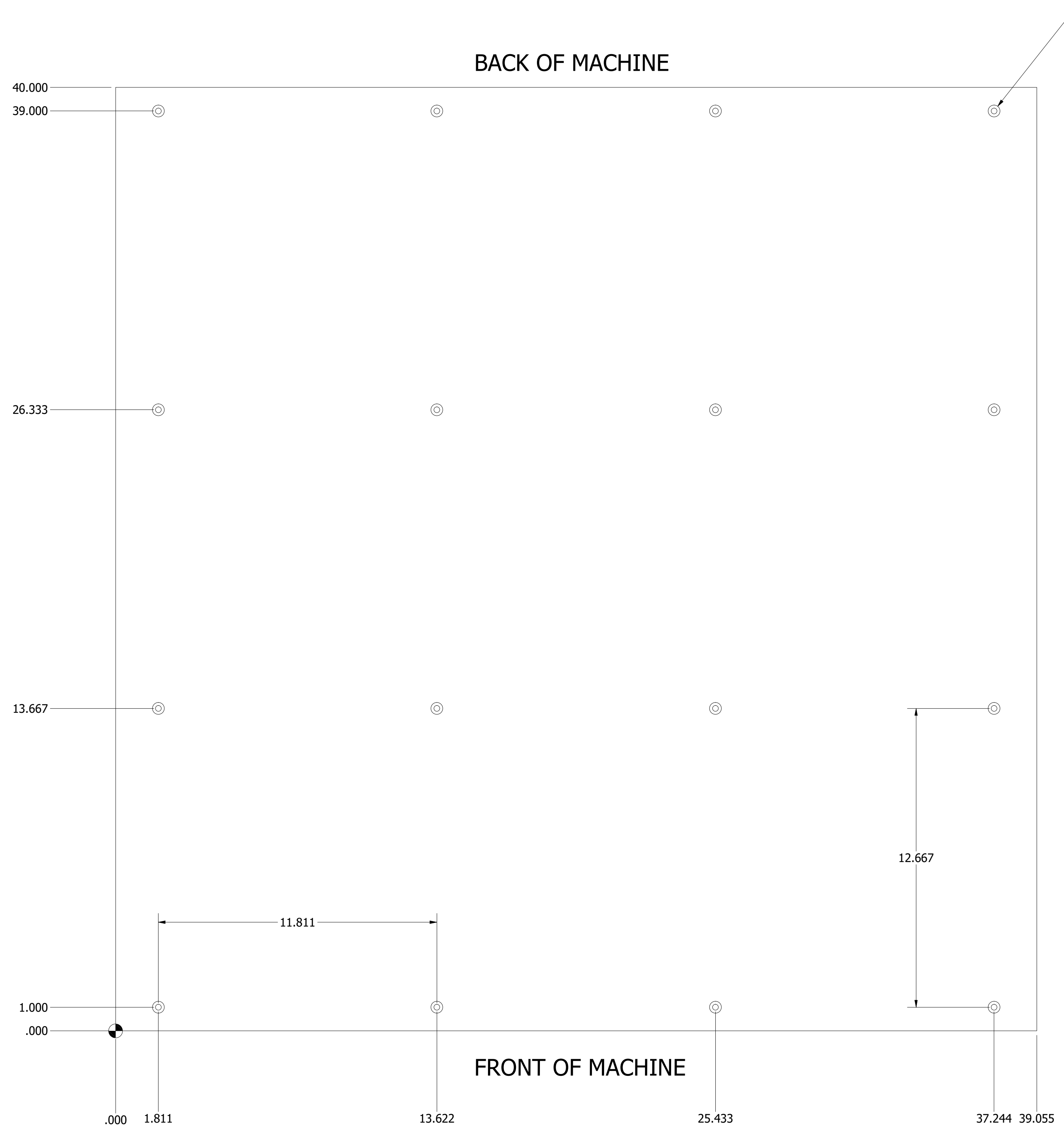
Shapeoko 4 XXL



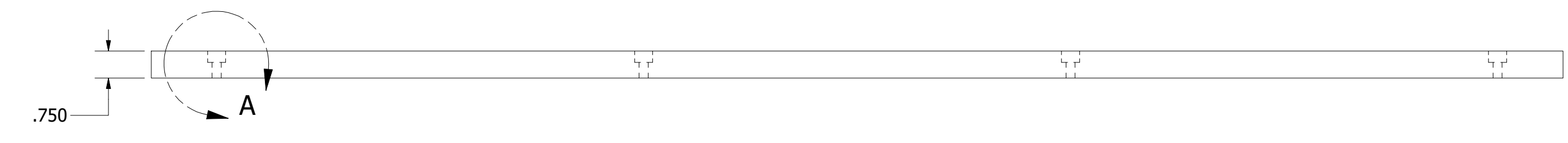
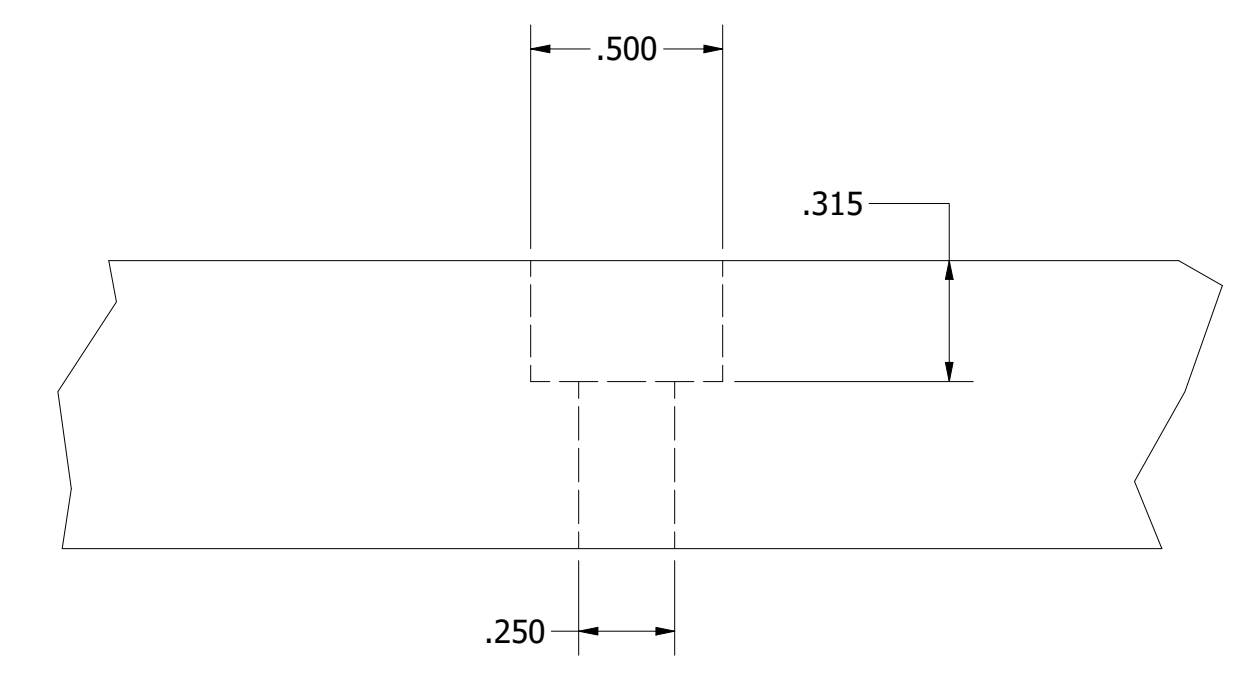
DESIGNED	edward	5/13/2020	
DRAWN	edward	6/9/2021	
TITLE			
SIZE	DWG NO		REV
D			
SCALE	.4	COPYRIGHT ALL RIGHTS RESERVED	SHEET 1 OF 9

Notes:

1. All dimensions are inch unless otherwise noted.
2. 3/4" material thickness recommended.



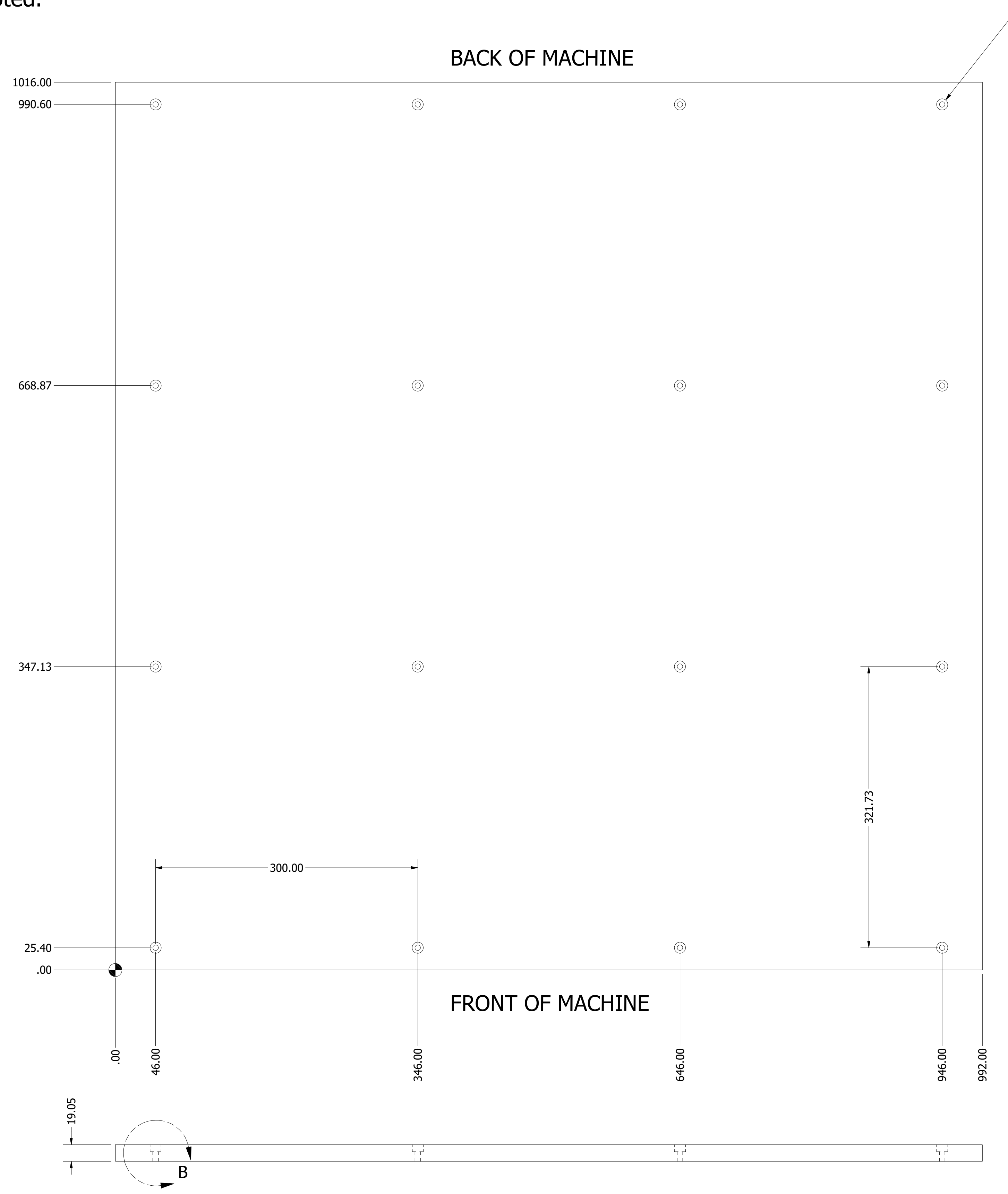
Ø.250 THRU
 L Ø.500 ▽ .315
 (typ. all)



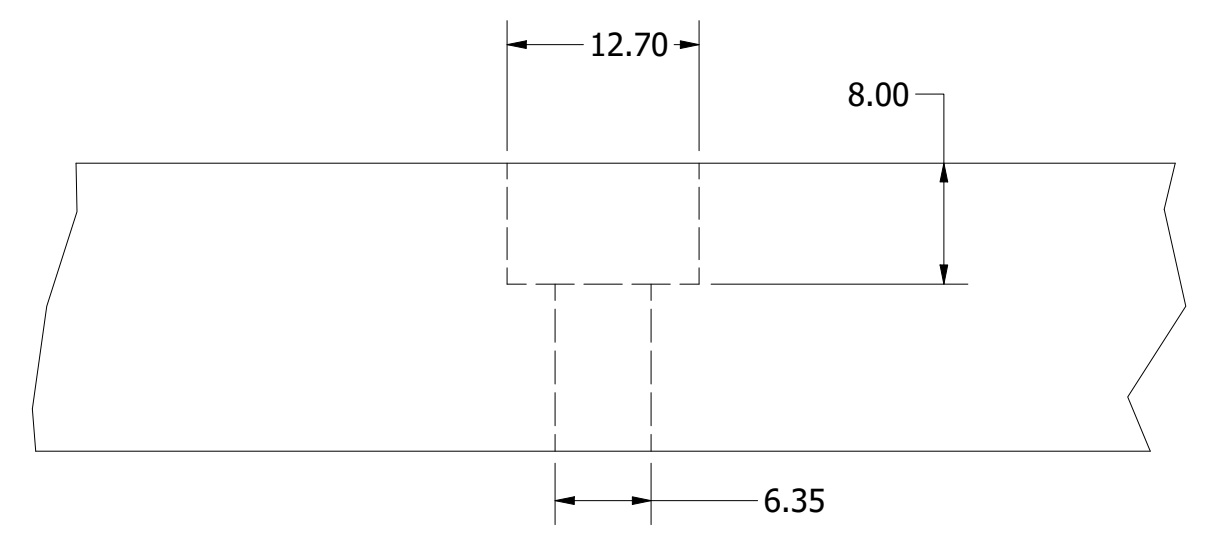
DESIGNED	edward	6/9/2021	
DRAWN	edward	6/9/2021	
TITLE			
SIZE	DWG NO		REV
D			
SCALE	1 / 3	COPYRIGHT ALL RIGHTS RESERVED	SHEET 2 OF 9

Notes:

1. All dimensions are millimeter unless otherwise noted.
2. 19mm material thickness recommended.



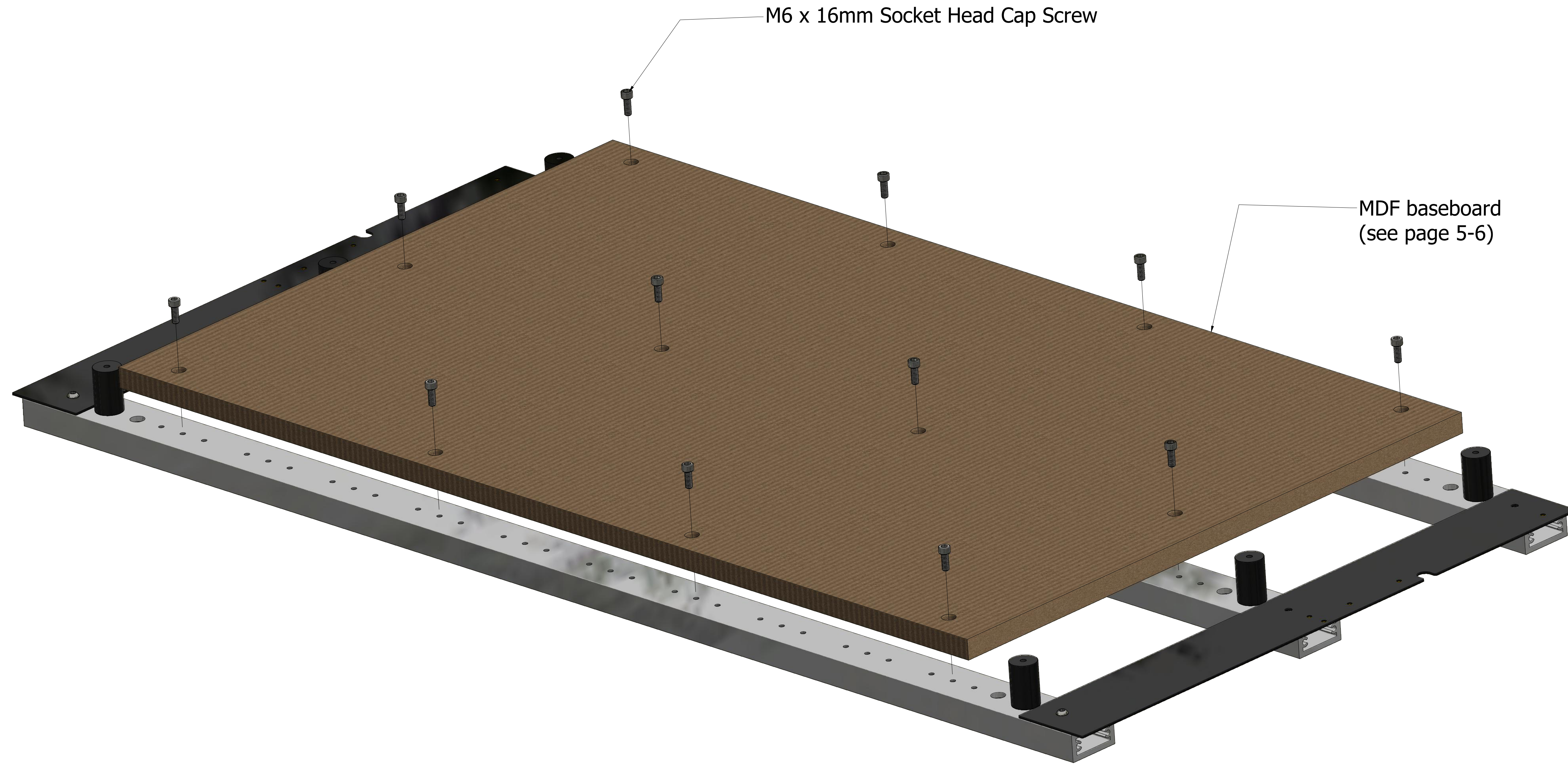
Ø6.35 THRU
 12.70 ± 8.00
 (typ. all)



DETAIL HOLE FEATURES


DESIGNED	edward	6/9/2021	
DRAWN	edward	6/9/2021	
TITLE			
SIZE	DWG NO		REV
D			
SCALE	1 / 3	COPYRIGHT ALL RIGHTS RESERVED	SHEET 3 OF 9

Shapeoko 4 XL



M6 x 16mm Socket Head Cap Screw

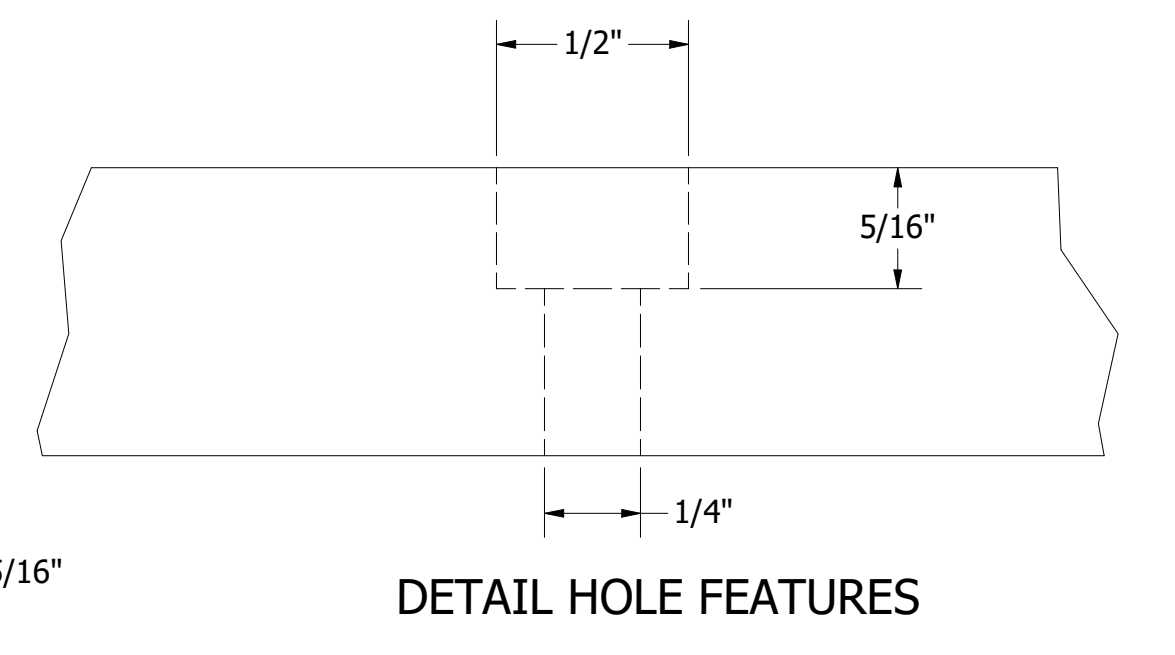
MDF baseboard
(see page 5-6)

DESIGNED	edward	6/15/2021	
DRAWN	edward	6/9/2021	
TITLE			
S4 XL MDF LAYOUT			
SIZE	DWG NO		REV
D			
SCALE	.5	COPYRIGHT ALL RIGHTS RESERVED	SHEET 4 OF 9

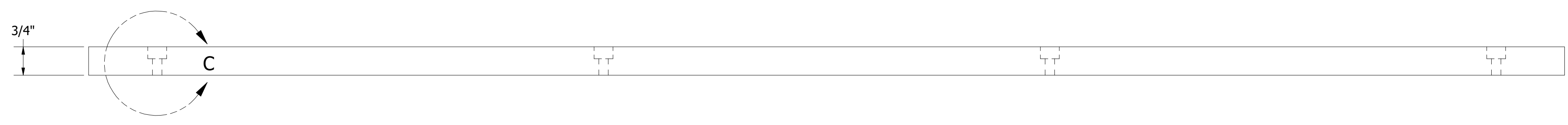
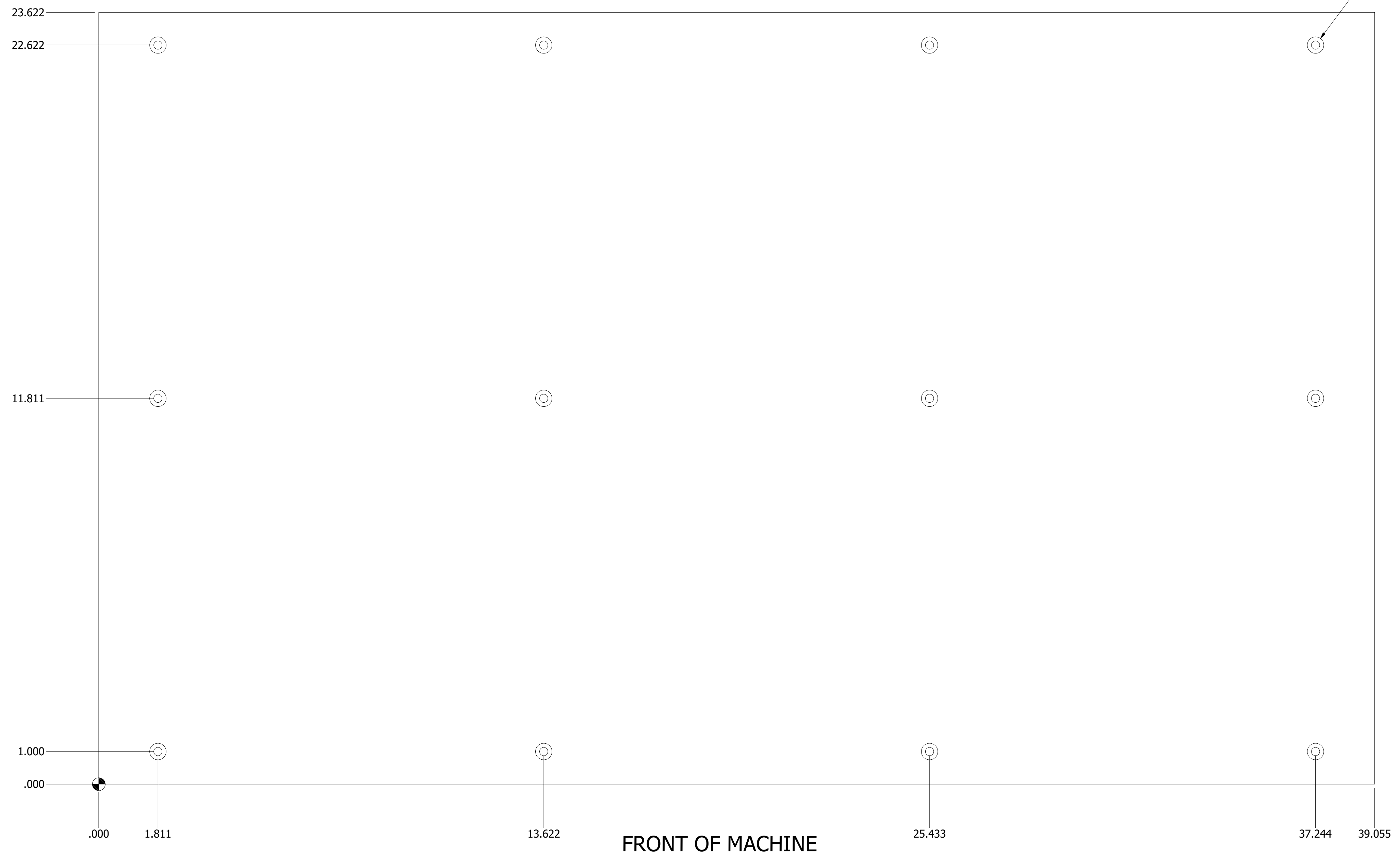
Notes:

1. All dimensions are inch unless otherwise noted.
2. 3/4" material thickness recommended.

BACK OF MACHINE



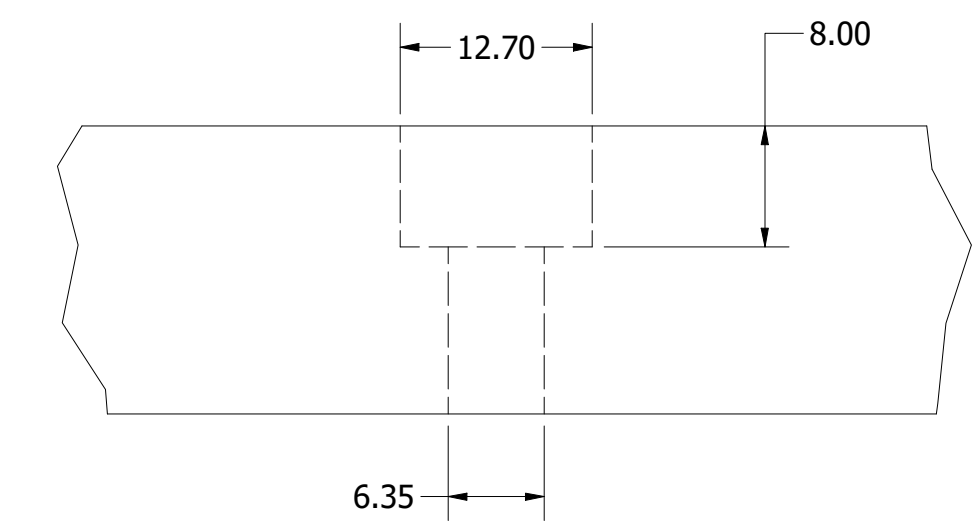
Ø1/4" THRU
└┘ Ø1/2" ± 5/16"



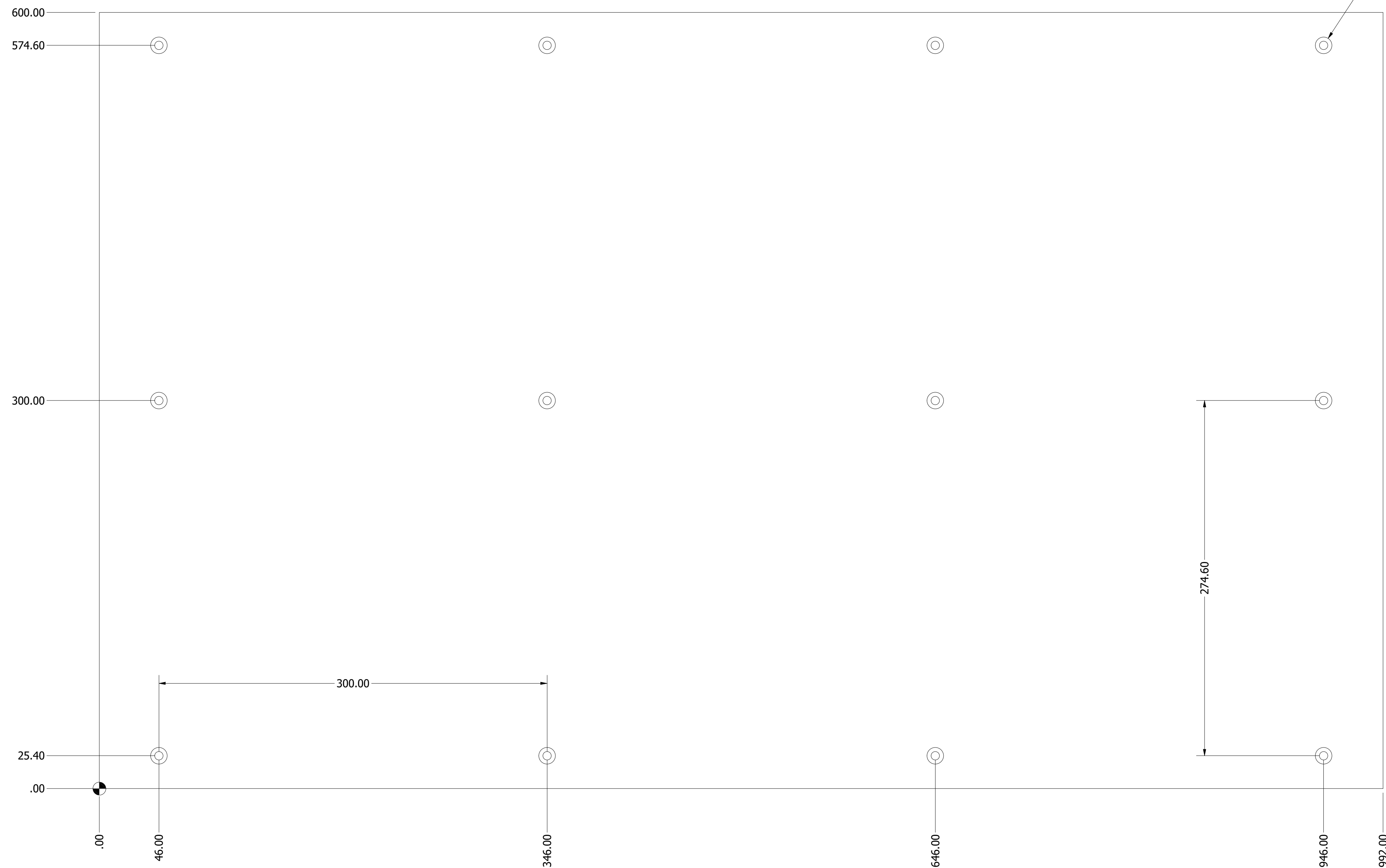
DESIGNED	edward	6/15/2021	
DRAWN	edward	6/9/2021	
TITLE			
S4 XL MDF LAYOUT			
SIZE	DWG NO		REV
D			
SCALE	.5	COPYRIGHT ALL RIGHTS RESERVED	SHEET 5 OF 9

Notes:

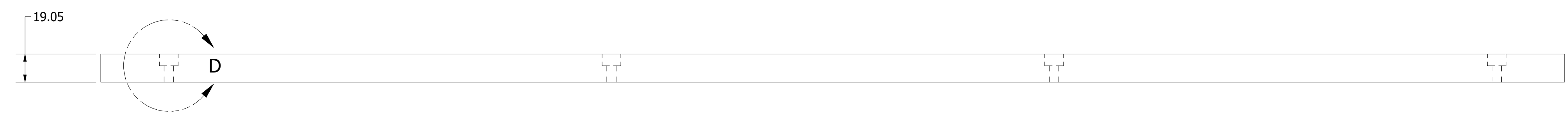
1. All dimensions are millimeter unless otherwise noted.
2. 19mm material thickness recommended.



BACK OF MACHINE

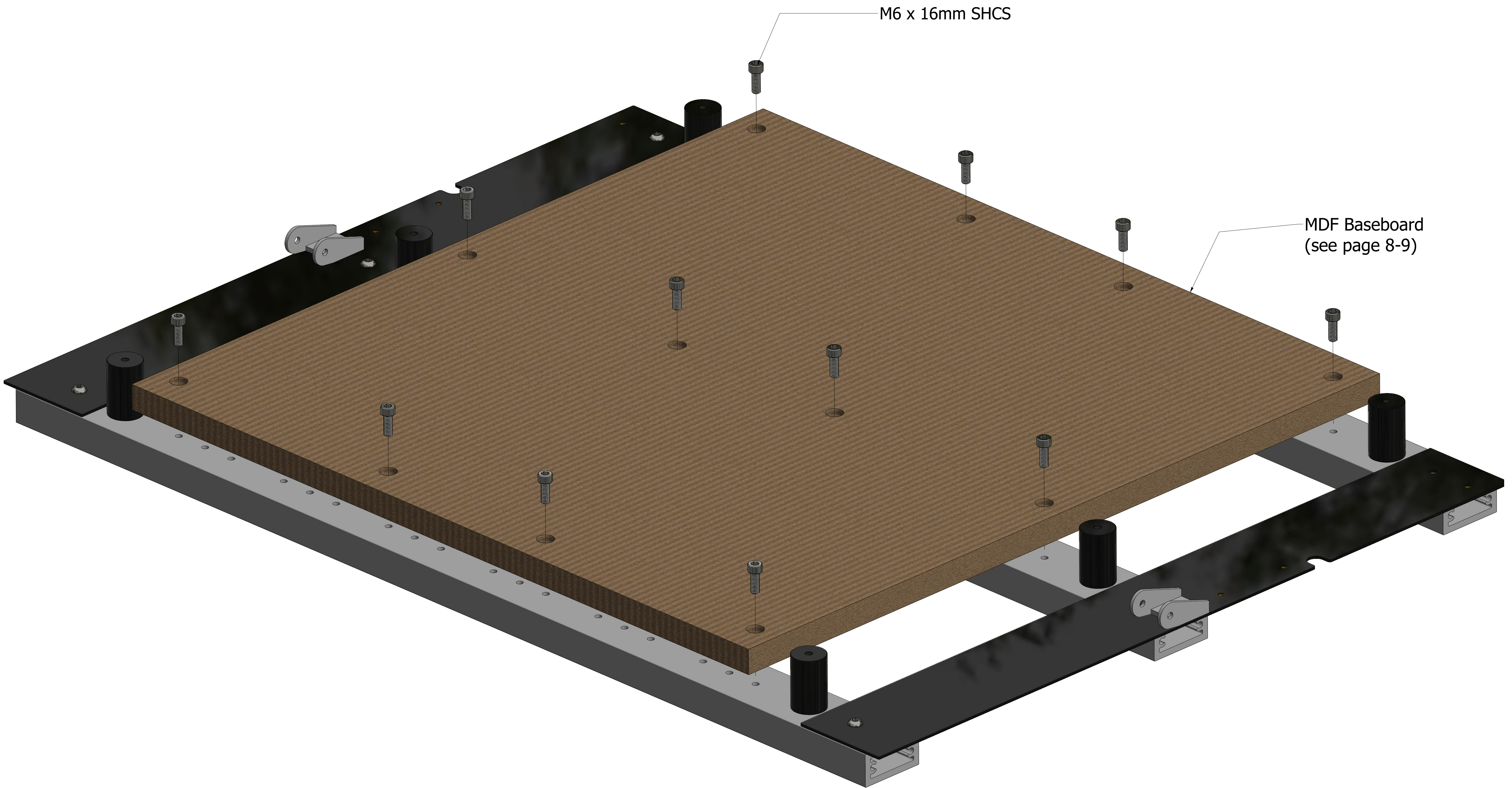



FRONT OF MACHINE



DESIGNED	edward	6/15/2021	
DRAWN	edward	6/9/2021	
TITLE			
S4 XL MDF LAYOUT			
SIZE	DWG NO		REV
D			
SCALE	.5	COPYRIGHT ALL RIGHTS RESERVED	SHEET 6 OF 9

Shapeoko 4



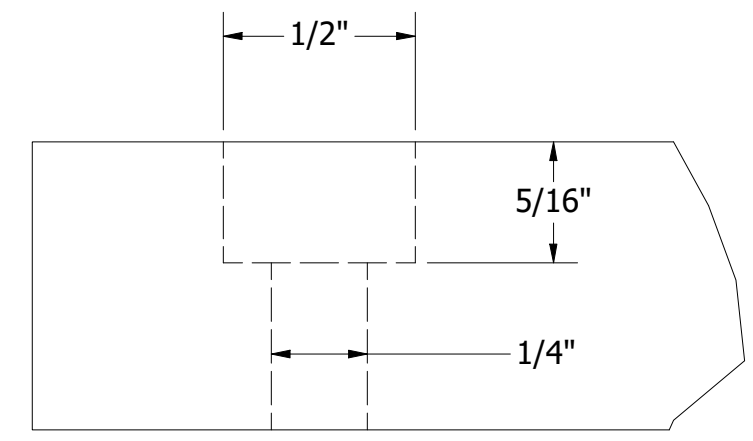
DESIGNED	edward	4/21/2020	
DRAWN	edward	6/9/2021	
TITLE			
SIZE	DWG NO		REV
D			
SCALE	.75	COPYRIGHT ALL RIGHTS RESERVED	SHEET 7 OF 9

Notes:

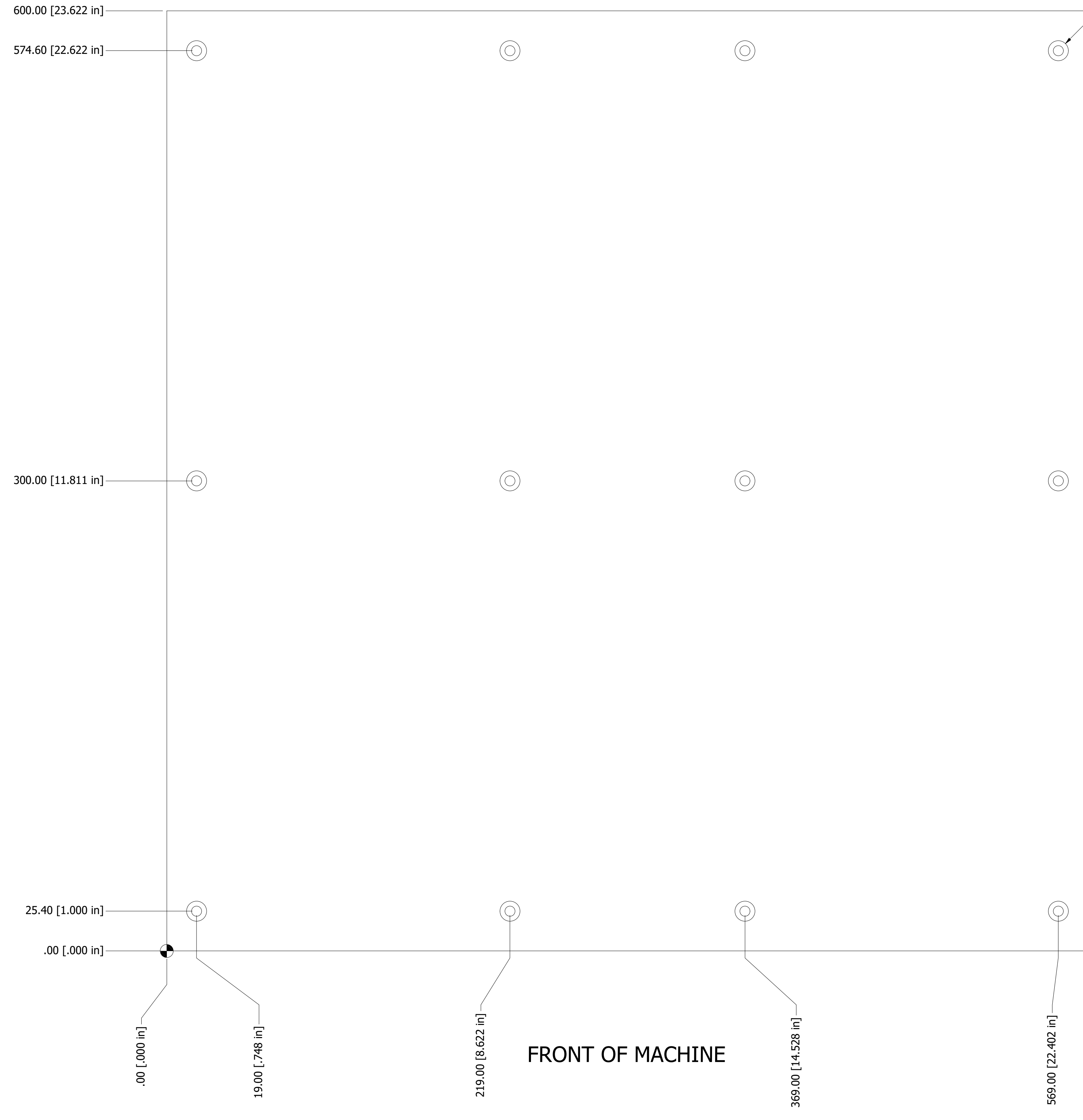
1. All dimensions are inch unless otherwise noted.
2. 3/4" material thickness recommended.

BACK OF MACHINE

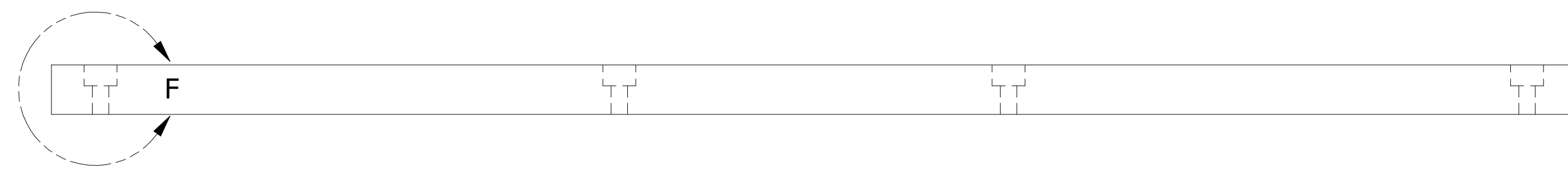
Ø1/4" THRU
└┘ Ø1/2" ▽ 5/16"



DETAIL HOLE FEATURE



FRONT OF MACHINE

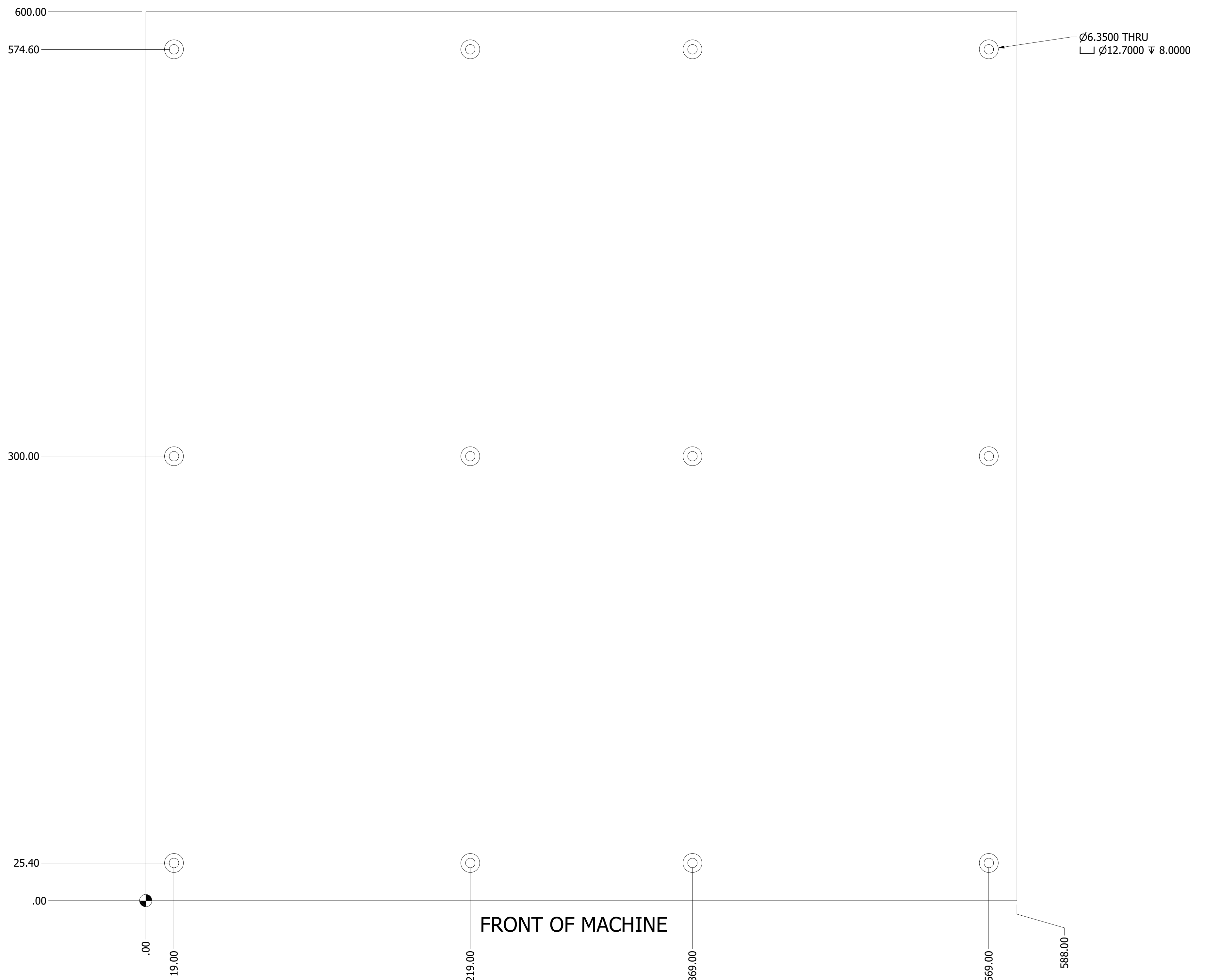


DESIGNED	edward	7/8/2021	
DRAWN	edward	6/9/2021	
TITLE			
SIZE	DWG NO		REV
D			
SCALE	.6	COPYRIGHT ALL RIGHTS RESERVED	SHEET 8 OF 9

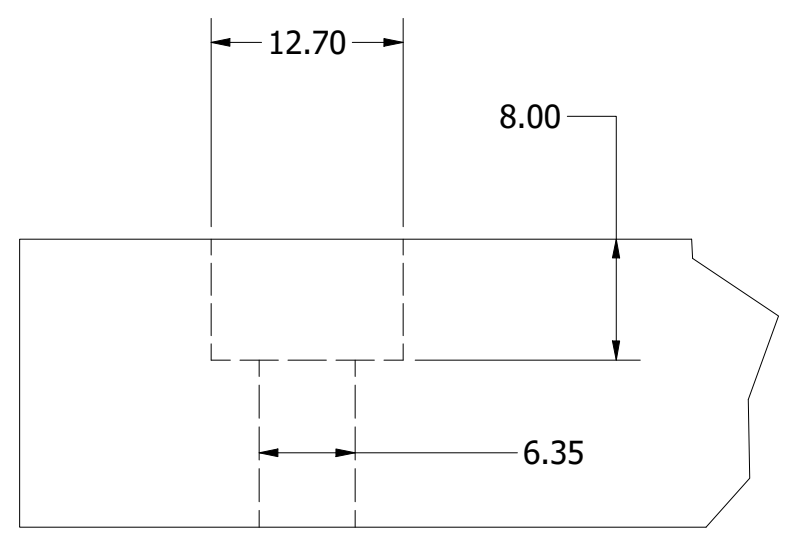
Notes:

1. All dimensions are millimeter unless otherwise noted.
2. 19mm material thickness recommended.

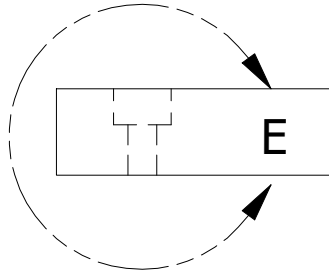
BACK OF MACHINE



FRONT OF MACHINE



DETAIL HOLE FEATURE



DESIGNED	edward	7/8/2021	
DRAWN	edward	6/9/2021	
TITLE			
SIZE	DWG NO		REV
SCALE	.6	COPYRIGHT ALL RIGHTS RESERVED	SHEET 9 OF 9